



PVR Guide

903.797.4357
903.613.2711 (Holly Lake)
877.482.3839 (toll free)

To program the ETEX remote to the TV automatically press the **TV button** one time. Press and hold the **SETUP button** until the TV button blinks 2 times, then press **991**, then press **1**. Now press the **POWER button**, then press the **CH^ button** until the TV turns off. Next, press the **SETUP button**. The remote is now programmed to turn the TV off and on, and to raise and lower the volume.

To manually setup the ETEX remote, press the **TV button** one time and release it. Now press the **setup button** and hold it down until the TV button blinks 2 times (when pressing the **setup button** the **tv button** will light up then go out, then blink 2 times while holding the **setup button**), Now put in the code for your TV that is in the manual for the remote. Press the **POWER button** and the TV should turn off, if it does not turn off the TV, then repeat the above steps inputting a different code until the TV turns off. Once the TV turns off, press the **POWER button** to turn the TV back on, then press the **“CABLE/STB” button** to put the remote back into cable mode.





To program the ETEX remote back to the ETEX STB, call the Network Operations Center (N.O.C.) at **903-797-8324**.

Remote A User Guide

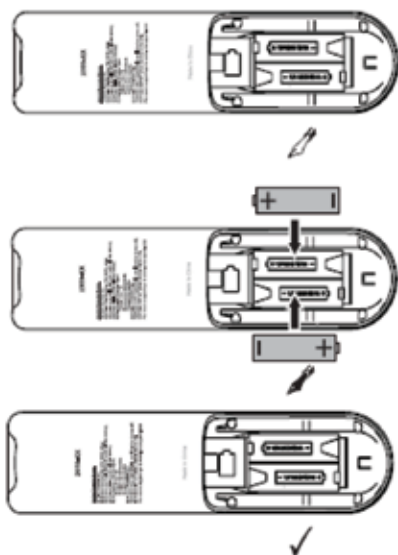


Key	Function
	Use the Page-plus or Page-minus keys to page up or down through Menu screens and the program Guide .
	The A, B, C or D are keys used by our installers only for system setup and diagnostics.
	Use VOL+ (or VOL-) to raise (or lower) the audio volume.
	Press ON DEMAND for direct access to On-Demand programming and other interactive services.
	Use Channel-plus or Channel-minus to select the next higher or lower channel. For DVD players, use these same keys to skip ahead or back through chapters on a disc. For amplifiers or receivers, use these keys to select the next higher or lower preset station.
	Press MUTE once to turn sound off; press again to turn sound back on.
	Use FAV to cycle through your favorite channels stored on your service provider's set-top box.
	Use the keypad numbers one-through-nine , and zero , to directly tune channels, such as "zero-nine," etc.
	In CBL mode, press INPUT to view other video sources (A or B) instead of cable. In all other modes, use INPUT to select an input source for that device.
	Press ASPECT once to change the aspect ratio (4:3 or 16:9) on your STB or TV.
	These buttons are "macro" keys that allow for future service expansions. Currently, the only button here with any function is the "CC" button which allows you to turn Closed Captioning on and off. (Not all programs will have Closed Captioning available.)

Remote A User Guide

Key	Function
	Use PIP ON/OFF to open or close PIP window.
	Use SWAP to swap the primary viewing channel with the PIP channel. For a DVR/PVR, SWAP can be used to switch the active channel tuner.
	Use MOVE to move the PIP window location.
	Press PIP+ / PIP- to change the PIP channel.

INSTALLING BATTERIES

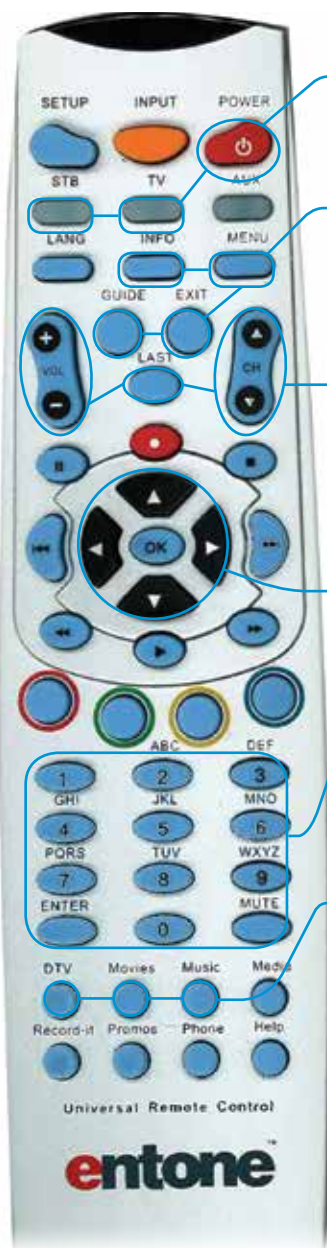


1. On the back of the remote control, press your thumb on the indentation on the battery door and slide the battery door off.
2. Locate the two (2) enclosed AA batteries. Match the + and - marks with those in the battery case, then insert them.



Remote B User Guide (ENTONE)

Your remote controls the set-top box, your television set, and, optionally, any auxiliary device, such as a DVD player or VCR. Press STB, TV or AUX to select the device you wish to operate.



1. The **POWER** button can be used for turning the set-top box or your television set on or off.
To get started, press TV, then POWER to turn on the television set. Then, press STB and use the Channel Up and Down buttons to change channels.
2. When using the program **GUIDE**, **INFO** provides information about selected programs, **MENU** displays the system menu to access features, **GUIDE** shows you detailed program listings, and **EXIT** returns you to your program, or to the previous menu.
3. Adjusting the volume and channel uses the **VOL[▲]** and **VOL[▼]** buttons and the **CH[▲]** and **CH[▼]** buttons. The **LAST** button returns you to the last channel you viewed.
Please note that, if pressing the CH[▲] and CH[▼] buttons causes your picture to become snowy, use the numeric keypad to enter the channel on your remote's label ... either 10, 12 or 23 ... then press STB and begin to change channels..
4. Navigation through on-screen selections uses the **LEFT**, **RIGHT**, **UP** and **DOWN** buttons. To select a certain highlighted feature in the menu, press the OK button. To move a page at a time through the program Guide, use the Page Left and Page Right keys.
5. The numeric keypad allows you to directly enter channel numbers or other info at menu prompts. **MUTE** silences TV volume. To cancel the Mute, press the VOL-plus button.
6. You may jump directly to main features. The **DTV** button returns you to normal viewing at any time. The **MOVIES** button shows future releases of Video on Demand. The **MUSIC** button takes you to 46 channels of commercial-free music.
(Please note that the other buttons on this section of the remote are not used at this time.)

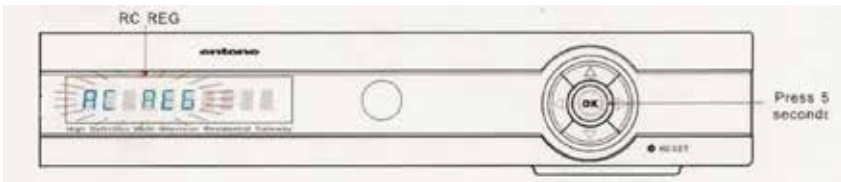
Universal Remote Control

entone

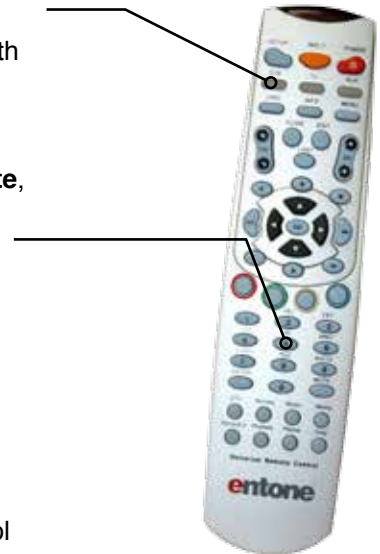
Registration Procedure

Entone has introduced a new and simpler Remote Control registration method via Radio Frequency. To register the remote control to the Entone receiver box, do the following:

1. **To register the remote control to your receiver box**, first see that the set-top box is turned on and the remote control antenna is installed.
2. **Next, press and hold the OK button** on the set-top box front panel for about 5 seconds. Releasing the **OK button**, the front panel LED blinks red and green twice, then remains red.



3. **Now, press and hold the STB button** on the remote control for approximately 5 seconds. Both the STB and AUX buttons will illuminate. The remote is now in registration mode.
4. **Next, using the number keypad on the remote**, press
 - 1 to "Register remote control to Decoder 1,"
 - 2 to "Register remote control to Decoder 2,"
 - 3 to "Register remote control to Decoder 3".
5. **Note that pressing any key other than 0, 1, 2 or 3** will cause the set-top box LED to extinguish. Also, if no button is pressed within 10 seconds, the set-top box LED will extinguish and the remote control registration will cancel. When the set-top box LED on the remote control handset blinks twice, the registration process was successful.



Manual TV Programming Procedure

Obtain the device code from your installer. For future reference, you should write down your device codes. (If you could not find the code, or it does not work after trying the codes for your brand, go to the next section to try the auto-search procedures.)

Now, turn on your device and have media inserted (if applicable) then, on the remote control,

1. press a device mode key (such as TV) once. (Use the AUX mode key to program control of VCR, DVD player, cable box, satellite set-top-box and audio devices.)
2. Press and hold the **SETUP** button until the selected mode key (for example, TV) blinks twice, then release **SETUP**. The device mode key will light up.



3. Now, press the TV key for 5 seconds and the TV light will illuminate.
4. Next, enter the four-digit device code for your device. If done correctly so far, the device mode key will blink twice. (If you enter an invalid device code, the selected device mode key will blink 7 times very quickly and the device program mode will be terminated.)
5. Finally, aim the remote at your device and press **POWER** once. The device should turn off. If it does not respond, repeat the above steps with alternate codes.

Auto-Search Programming Procedure

If your device does not respond to the remote after trying all device codes for your brand, or if your brand is not listed at all, try searching for your device code by pressing the desired device key once (for example, TV).

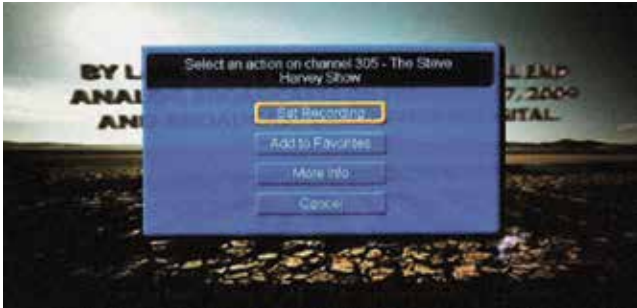
6. Now, press and hold **SETUP** until the device key blinks twice, then release **SETUP**.
7. Press the **POWER** key once and aim your remote at the device.
8. Press either the **CH[^]** or **CH^v** key to autoscans. In this search mode, the remote will send IR codes from the library in 5-second intervals.

The device key [TV] will be on and blink every 5 seconds while in device scan mode. If the device light turns off, a working code has been found. Press **OK** once to lock-in the code. The selected mode key [TV] will blink twice. If all code sets of that device are exhausted in the search and the **OK** is not pressed, the selected device key [TV] will fast-blink 7 times and the search mode will terminate.

PVR stands for Personal Video Recorder. You can record a live event, or schedule recording of a future program. The PVR Quick Reference Menu allows you to organize and watch previously recorded videos.

Recording a Live program

While you are watching a live program, press the **RECORD** button on your remote. A red light will turn on in the info bar of the set-top box. Recording begins immediately.



You can also press the **OK** on the remote while watching a program and a "Select an Action" box appears. Choose "**Set Recording.**" Another way to start a quick recording is in the Guide. Press **GUIDE**, highlight a program you want to record using the **Arrow buttons**, and press **RECORD**. (If the program is currently on, recording begins immediately.)

Schedule a Recording

To record through the Guide

1. press **GUIDE** on the remote
2. arrow to the program you want to record
3. press **OK**
4. Select "**Set Recording,**" press **OK**
5. A red record icon will appear next to the program you scheduled

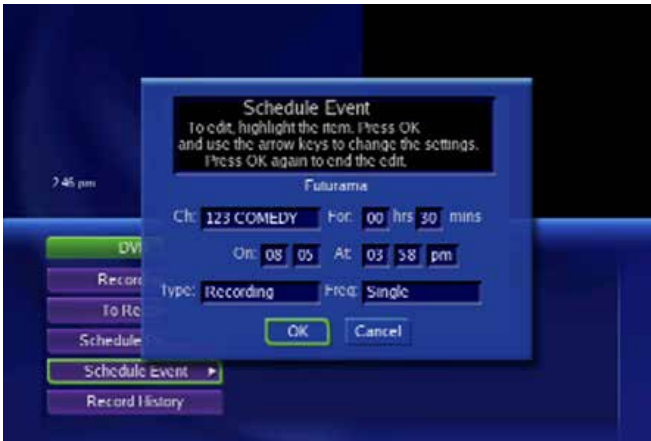


Record through the Menu

To record through the Menu, press **MENU** on the remote, scroll to **PVR** and press **OK**.



Scroll to "Schedule Event," press **OK**, and enter event information.



Press **OK** and then scroll up to "To Record." A red dot will appear beside the program indicating it is on the list to record. Press **EXIT** on the remote to return to TV viewing.



PVR Quick Reference Menu

To access your PVR Quick Reference Menu,

1. Press **MENU** on your remote.
2. Scroll to **PVR** and press **OK**.
3. Navigate around the menu by using the **arrow buttons** and **OK**.



“Recordings” lists programs you have already recorded.



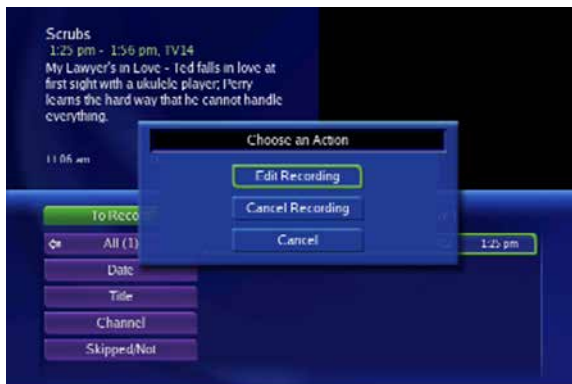
Use the arrow keys to scroll over to the recording you would like to play, lock, or delete and press OK. Locking a recording prevents the system from deleting that program to make space for new ones for new ones.



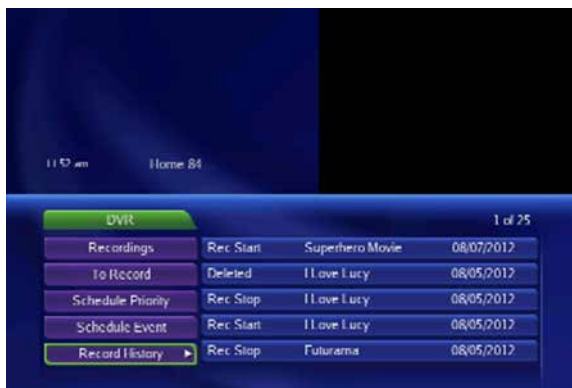
“To Record” lists all events you have scheduled.



Use the arrow keys to scroll over and highlight a future recording and press OK. This will give you the option to “Edit Schedule” or “Cancel Recording”



“Record History” logs when recordings start, complete or are cancelled.



Using Scheduling for Reminders or Recording

Event timers allow you to generate reminders on your receiver to tune in, or record a future program. You can create a specific timer for a future program with start and stop times. You may access the options in several ways.

Schedule through a Show

1. While viewing a show, use the down arrow button to display program info,
2. then use the right arrow buttons to select a future program.
3. Once the program is selected, press OK.
4. After pressing OK, you can view options for Schedule Event, Record Program, Record Series, Set Reminder, Set Autotune, Expanded Info, Or Cancel.

To schedule through the Guide,

1. press the GUIDE button, then use the arrow buttons to select a future program and press OK.
2. Now, use the arrow buttons to navigate to Scheduled Event and press OK.
3. You are now able to view the options Schedule Event, Record Program, Set Reminder, Set Autotune, Expanded Info, or Cancel.



For scheduling events through the Event Timer,

1. press the GUIDE button.
2. Use the arrow buttons to select a future program. Once selected, press OK.
3. Now use the arrow buttons to scroll to "Schedule Event" and press OK.
4. Use the arrow buttons to highlight a field and press OK.
5. After pressing OK on the field you want to change, use the left and right arrow buttons to change the type from Recording to Reminder or Autotune.)
6. Use the arrow buttons to shift from one field to the next and make more changes.
7. Once you are through Scheduling an Event, use the arrow buttons to scroll down to OK, and press the Ok button.
8. Your Event has now been set to do the tasks you programmed.

Event Timer Types

“**Record**” tunes the receiver to the program when it begins and starts recording the program.

“**Autotune**” reminds you that a program is about to start and tunes the receiver to the program when it begins.

“**Reminder**” tells you that a program is about to start.

Event Timer Frequency

“**Single**” means a one-time event.

“**M-F**” indicates that an event is scheduled for weekdays on the same channel, at the same time each day.

“**Everyday**” is for events scheduled all week on the same channel at the same time.

“**Weekly**” means an event scheduled once a week on the same channel on the same time and day.

Editing the Scheduled Event

To edit a scheduled event you may edit through the Guide or the Menu.

To edit through the Guide,

1. Press GUIDE, then use the arrow buttons to find the program with the reminder / autotune event, and press OK.
2. From there, use the arrow buttons to select Edit Recording, Cancel Recording, Cancel Reminder, Set Reminder, Set Autotune, Expanded Info, Autotune, Schedule Event, Remove from Favorites, More Info, or Cancel Once you’ve selected your action, press OK.
3. Your recording has been edited.

To edit through the Menu,

1. press MENU and use the arrow buttons to select “Vault” and press OK. Now you can edit your event.



2. Now use the arrow buttons to shift down to “Reminders.”
3. Use the right arrow button to scroll over to the Reminder you want to edit, and press OK.
4. After pressing OK you will be asked to “Cancel Reminder,” or to “Cancel.”
5. Once you have selected your action, press OK and your reminder has been edited.

Editing the Scheduled Recording

1. press MENU and use the arrow buttons to select "PVR," and press OK.



2. Use the arrow buttons to shift down and find "To Record," then press OK.



3. With the arrow buttons, navigate to highlight the recording to be edited and press OK.
4. Now use the arrow buttons to select Edit Recording, Cancel Recording or Cancel. Once you have selected your action, press OK.



5. Your recording has been edited.
(If you are currently viewing your recording and would like to edit it, you can also access the action window by pressing the arrow buttons and pressing OK.)

Event Timers Tips and Tricks

“Overlapping Event Timers” - If you try to create event timers for overlapping programs the receiver will prompt you to delete or edit one of the timers.

“Maximum Number of Event Timers” - The receiver is only able to create a certain amount of event timers. Once you have reached this limit, you must edit or delete a timer to create a new one.

“Power Off” - If the receiver power is off at the time of a reminder or Autotune event, the receiver will not turn on. If the receiver is off during a scheduled recording, the program will record on the PVR.

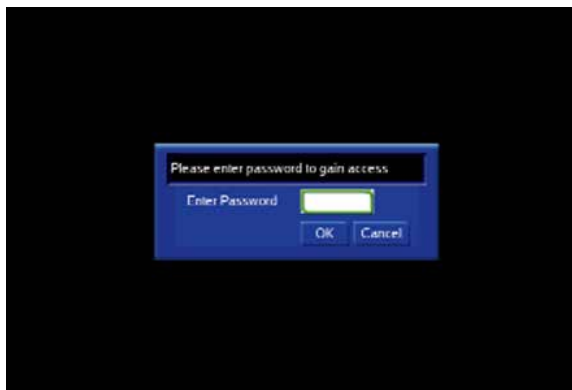
Parental Controls

Parental Controls allow you to determine which shows your children can watch and which are restricted. You may temporarily disable or enable all parental controls.

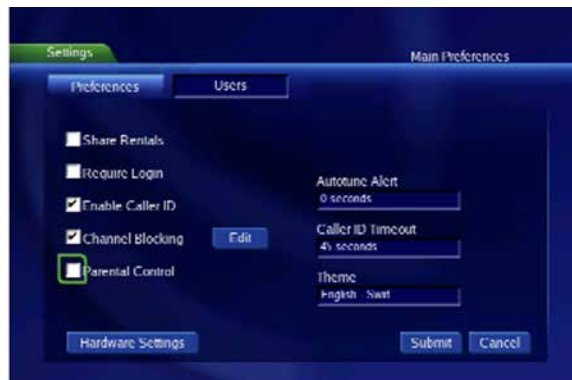
1. To set up Parental Controls, press the MENU button on remote, arrow to "Settings," and press OK. Enter your password and press OK.



2. Enter your password (default password is the number 0) and press OK.



3. Now, scroll to Preferences tab, then down to Parental Controls, and press OK. (A check mark will indicate that parental controls are activated.) Finally, scroll right to Edit, make your changes, and press OK.



- Finally, scroll right to Edit, press OK, then scroll through the channels, stopping on the channels you want to block and pressing OK. A circle with a line through it will be added to the channels you have selected to block.



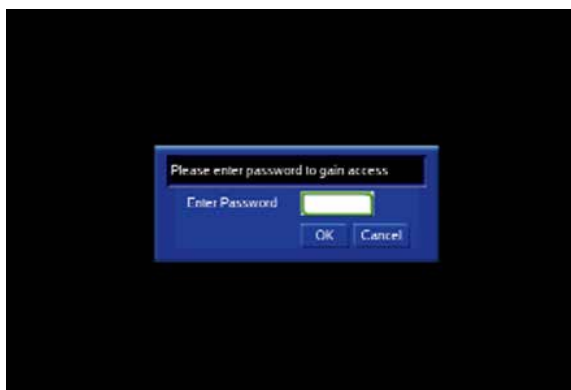
- After blocking the channels you want to block, scroll down to “Update” and press OK.

Changing Parental Controls using TV and Movie ratings

- To change Parental Controls by TV and Movie ratings, press “MENU,” scroll to “SETTINGS,” and press OK.



- Put the password in (default password is the number 0), press OK.



- Use the arrow keys to scroll over to “USERS” and press OK
- On the next screen scroll down to “Parental Control” and press OK

Program Monitoring

To change existing Parental Controls, scroll down to the appropriate box and press OK.

Then, use the arrow keys to change to the rating you would like, press OK.

Movie Ratings include:

G (General Audiences)

PG (Parental Guidance recommended)

PG-13 (Parental Guidance strongly recommended)

R (Restricted - Under 17 needs parent)

NC-17 (Not recommended for kids under the age of 17)

AO, X, XX and XXX (mean Adults only)



TV Ratings include:

TVY (Recommended for All Children)

TVY7 (Recommended for Children over 7)

TVG (General Audience)

TVPG (Parental Guidance)

TV 14 (Parents Cautioned)

TVMA (Mature Audiences).



Scroll down to Content Rating. By pressing OK at any of these, a check mark will appear indicating that this rating has been activated.

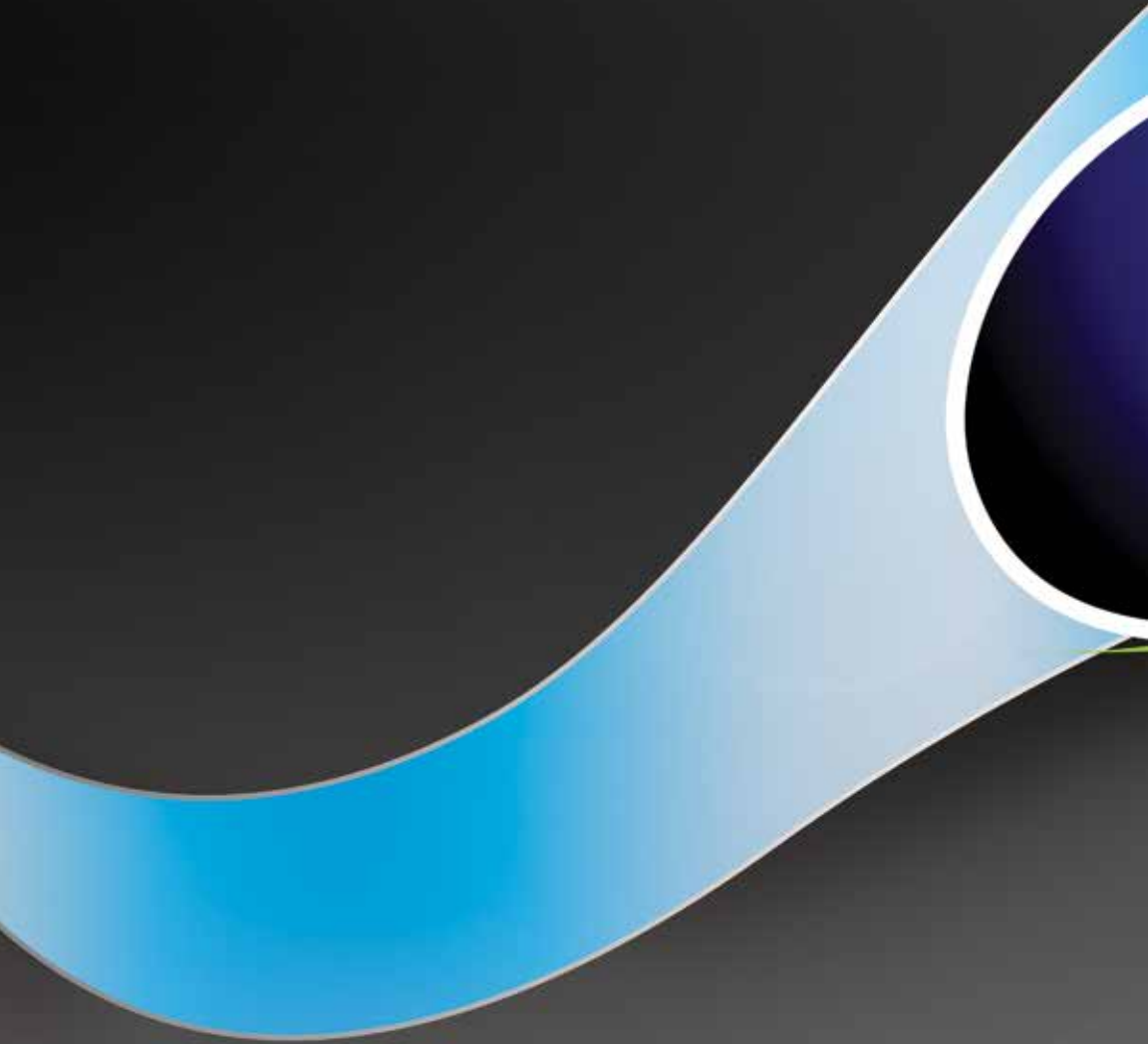
Content codes are:

- S (Sexual Situations)
- L (Language)
- D (Suggestive Dialogue)
- F (Fantasy Violence)
- V (Violence)



When finished making changes, press Submit, and then EXIT on the remote.





etex.net